



'OHANA NAVY
FAMILY HOUSING

HUNT MILITARY COMMUNITIES

COMMUNITY DIRECTOR UPDATE

APRIL 1, 2025



COMMUNITY NEWS & UPDATES

Tenant Satisfaction Survey – We Want to Hear From You!

Our Tenant Satisfaction Survey is underway. Residents should have received the survey link via email from donotreply@rdniehaus.com. If not, you can access it at <https://navy-survey.rdniehaus.com> or request a new invitation at navytss@rdniehaus.com (include the service member's name, NASWI, and your address).

This is your chance to provide open and honest feedback on maintenance, curb appeal, home quality, and more. Complete the survey by May 1st for a chance to win e-gift cards ranging from \$50 to \$250. We look forward to hearing from you – your voice matters!

Enhancing Neighborhoods Through Key Upgrades

We are committed to enhancing our communities through ongoing improvements, including lateral line replacements in the Catlin community and water heater upgrades in the Pearl City neighborhood. We appreciate your understanding and patience as we carry out construction in various neighborhoods. Our goal is to consistently improve and maintain our neighborhoods for current and future families. Thank you for your understanding as we undertake these important projects.

UPCOMING COMMUNITY EVENTS

COMMUNITY EGG HUNT



Date: April 18th
Location: Ford Island, PCP, Halsey, Hokulani
Join us for a fun community egg hunt! Bring your cameras to take a picture with our bunny and enter into a raffle for some fun prizes.

DOG SPRING FLING






Date: April 23rd
Location: Dog Parks – Radford, Moanalua, Makalapa and PCP
Enjoy the opportunity to enter a raffle for a fun prize while connecting with fellow dog owners in the community.

TRASH & RECYCLING SCHEDULE

NEIGHBORHOOD	MONDAY	TUESDAY	WEDNESDAY	THURSDAY	FRIDAY
Camp Stover	Biweekly - Recycling			Trash	
Catlin Park		Biweekly - Recycling			Trash
Doris Miller Park		Biweekly - Recycling			Trash
Ford Island	Biweekly - Recycling			Trash	
Halawa		Trash		Biweekly - Recycling	
Hale Alii	Biweekly - Recycling			Trash	
Hale Moku		Biweekly - Recycling			Trash
Hele Mai	Biweekly - Recycling			Trash	
Hospital Point	Biweekly - Recycling			Trash	
Makalapa	Biweekly - Recycling			Trash	
Maloelap		Biweekly - Recycling			Trash
Marine Barracks	Biweekly - Recycling			Trash	
Pearl City Peninsula		Trash			Biweekly - Recycling


Leasing Office Contact Information

-  (808)784-7800 Opt. 1
-  HawaiiNavyLeasing@HuntCompanies.com
-  OhanaNavyCommunities.com



If you have already contacted our local Management and Housing office team and are not satisfied with the outcome, or if you have words of praise to share, we encourage you to reach out to our senior management.

Community Director
Jessica Aguirre
 Jessica.Aguirre@HuntCompanies.com

Director of Operations
Vacant


MAINTENANCE - CHECK FOR LEAKS

Regularly inspecting areas under sinks and around fixtures can help you identify potential leaks before they become a bigger issue. Look for water stains, dampness, or pooling water and ensure all connections are secure. Call our maintenance immediately as we do consider leaks to be an emergency. Addressing small leaks promptly can prevent water damage and helps us maintain the integrity of our homes. Thank you for contributing to the upkeep of our community.

RESIDENT FEEDBACK ★★★★★

We are grateful for your reviews and surveys! Our Leasing team are such stars that we often receive compliments about them. See what this resident had to say:

“Mrs. Davis, M was very helpful and informed me of different options to fit my needs. I walked into her office with needs and walked out with a signed offer letter. Thank you Mrs. Davis for such a pleasant experience during a stressful time. You took the stress away.” – Natasha H.

UPCOMING LOCAL EVENTS

The Hapalua – Hawaii’s Half Marathon

Date: April 13th

Location: Scenic Honolulu & Waikiki

The Hapalua, Hawaii’s premier half marathon, welcomes runners and walkers of all levels. Participants enjoy a scenic 13.1-mile route through Waikiki, around Diamond Head, and finish at Kapiolani Park. The event captures the spirit of aloha with stunning ocean views and a supportive atmosphere.

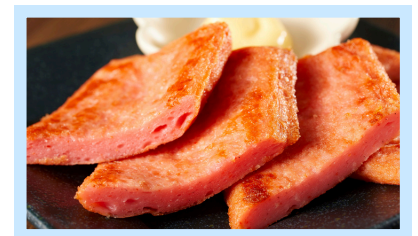


Waikiki Spam Jam

Date: April 26th

Location: Waikiki


The Waikiki SPAM JAM® celebrates Hawaii’s beloved SPAM® with local chefs, live entertainment, craft vendors, and family activities. It supports local charities, blending great food with community spirit.



If you have already contacted our local Management and Housing office team and are not satisfied with the outcome, or if you have words of praise to share, we encourage you to reach out to our senior management.

Community Director

Jessica Aguirre

 Jessica.Aguirre@HuntCompanies.com

Director of Operations

Vacant

